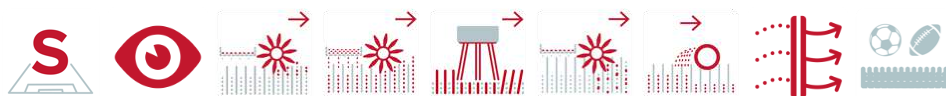


TurfBoy - Maintenance
TurfBoy TB2 / TB2T



TurfBoy - Maintenance

TurfBoy TB2 / TB2T



Item number/s:

6400161 / TB2

6212217 / TB2T

Ride-on machines for the cleaning and care of infilled (TB2) or non-infilled (TB2T) artificial turf.

TurfBoy TB2 is driven by a 11,8 kW (16 HP) air-cooled petrol engine. Due to its very compact design the machine is ideal for the work on sand infilled tennis courts or sand/rubber infilled pitches such as futsal courts. The working depth of the rotary brush can be adjusted via two spindles. The vibrating screen can be precisely adjusted, with variable settings from 4 to 10 mm, depending and in accordance with the condition of the infill material. You can easily clean the filter by turning the handwheel.

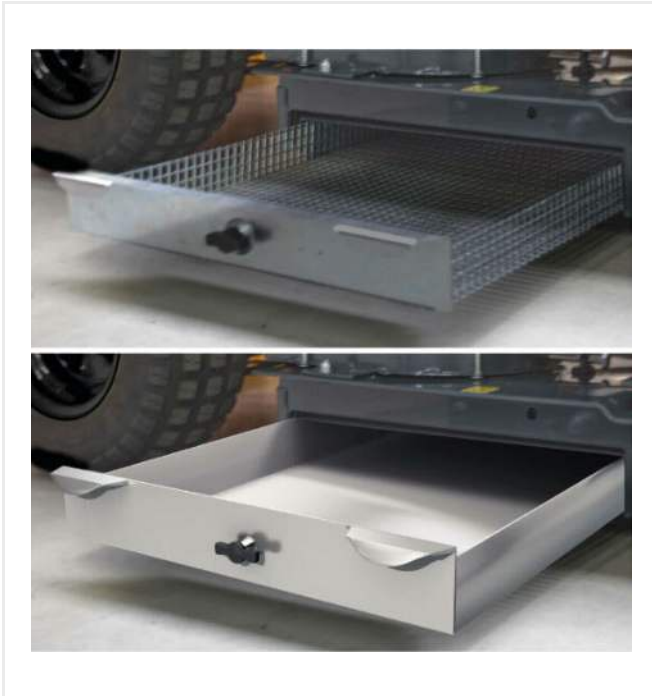
The brush housing and the drag brush row at the rear of TurfBoy TB2 can be lifted from the driver position. The drag brush stands on the left-hand side of the machine is overlapping it by 20 cm. Such positioning makes it possible to reach edges and corners. Due to the detachable trailing brush row, the TurfBoy TB2 can pass even doors of 1 metre width.

SMG dust filters installed by SMG comply with DIN EN60335-2-69/dust class "M" and EN779 "F8" or "F9". Dust with a high proportion of fines as well as granulate/fibre abrasion (microplastics) are extracted via the powerful turbine and bound in the filter.

TurfBoy - Maintenance

TurfBoy TB2 / TB2T

Detail views



Smooth adjustable

Vibrator sieve adjustable from 4 - 10 mm, cleans dirt out of the infill material with simultaneous repatriation.



Clean

Hand wheel for dedusting of the permanent filter.



Outstanding

Unilateral overlapped drag brush row.

TurfBoy - Maintenance

TurfBoy TB2 / TB2T

Detail views



Optional tines

Decompacting unit for gently loosening of the infilling material.

TurfBoy - Maintenance

TurfBoy TB2 / TB2T

Options/Attachments



BeltSpreader BS800

item no. 6221306

Ground driven spreader for artificial turf.



Triangle brush DB1600

item no. 6211805

Triangle brush for artificial turf.



Triangle brush DB1600F

item no. 6236543

Light, robust and foldable triangle brush for artificial turf.

TurfBoy - Maintenance

TurfBoy TB2 / TB2T

Options/Attachments



Triangle brush DB1000F

item no. 6235134

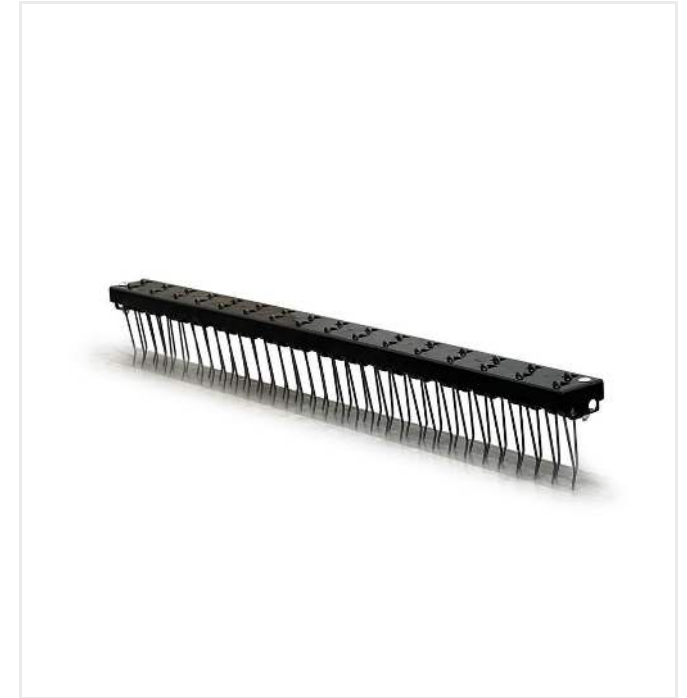
Light, robust and foldable triangle brush DB1000F.



Magnet bar ML1500

item no. 6220297

Magnet bar ML1500 for artificial turf maintenance.



Decompacting unit

item no. 6239732

Tines for gently loosening of the infilling material.

TurfBoy - Maintenance

TurfBoy TB2 / TB2T

Options/Attachments



Rubber drag mat

item no. 6400241

Rubber drag mat with steel frame, 1,500 x 2,000 x 70 mm.

TurfBoy - Maintenance

TurfBoy TB2 / TB2T

Technical information

Drive	2-cylinder petrol engine, air-cooled / 11,8 kW (16 HP)
Traction drive	hydrostatic, driving speed up to 9 km/h
Working width	900 mm
Weight	310 kg
Dimensions	L 1,860 x W 850 x H 1,200 mm
Shipping dimensions	L 2,150 x W 1,170 x H 1,400 mm

Subject to technical changes