

CareMax - Maintenance
CareMax CM2B

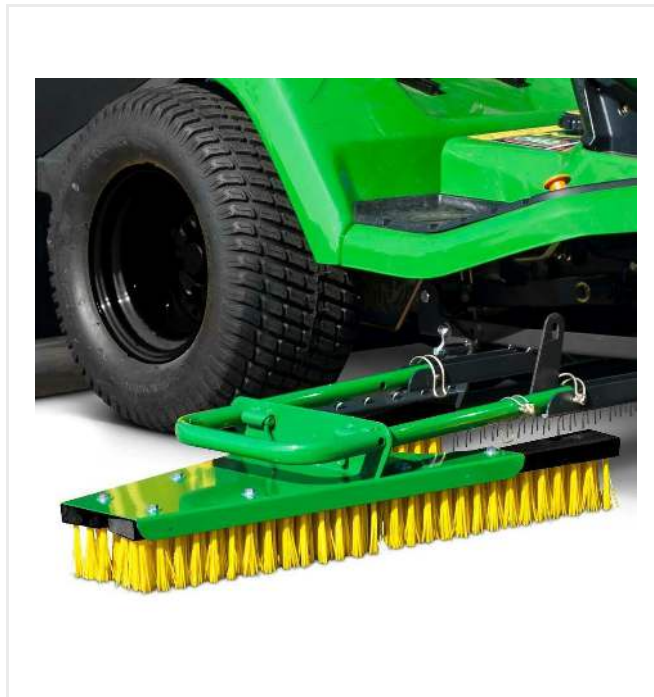


CareMax - Maintenance CareMax CM2B

Detail views



CareMax CM2B



Wingspan

Drag brush for the maintenance process (working width 2,400 mm), adequate adjustable steel tines for loosening of the infilling material.



Filter

Permanent filter with continuous dedusting of filtered suspended particles.

CareMax - Maintenance CareMax CM2B

Detail views



TurfKing TK1100

Rear-mount attachment with integrated rotary brush, drag brush and guide pulley.

CareMax - Maintenance

CareMax CM2B

Technical information

Drive	2-cylinder petrol engine, air-cooled / 16,4 kW (22,3 PS)
Traction drive	hydrostatic, driving speed up to 15 km/h
Filter box	permanent filter with continuous dedusting
Rotating brush	working width 1,100 mm
Working width	2.400 mm
Weight	685 kg
Dimensions	L 2,900 x W 1,300 x H 1,250 mm

Shipping dimensions

L 2,900 x W 1,300 x H 1,300 mm

Subject to technical changes